

Features

The TF mounting is installed in minutes by following the instructions provided. There is no need to fix the machines to the floor since the rubber base of the mounting keeps the machine in place. Whenever necessary, the machine can easily be re-positioned. The level is adjusted with load applied.

The rubber element of the TF mounting is oil and chemical resistant. All metal parts are zinc plated and chromated for protection against corrosion.

Models TF 250, TF 600 and TF 1200, also available in stainless steel.

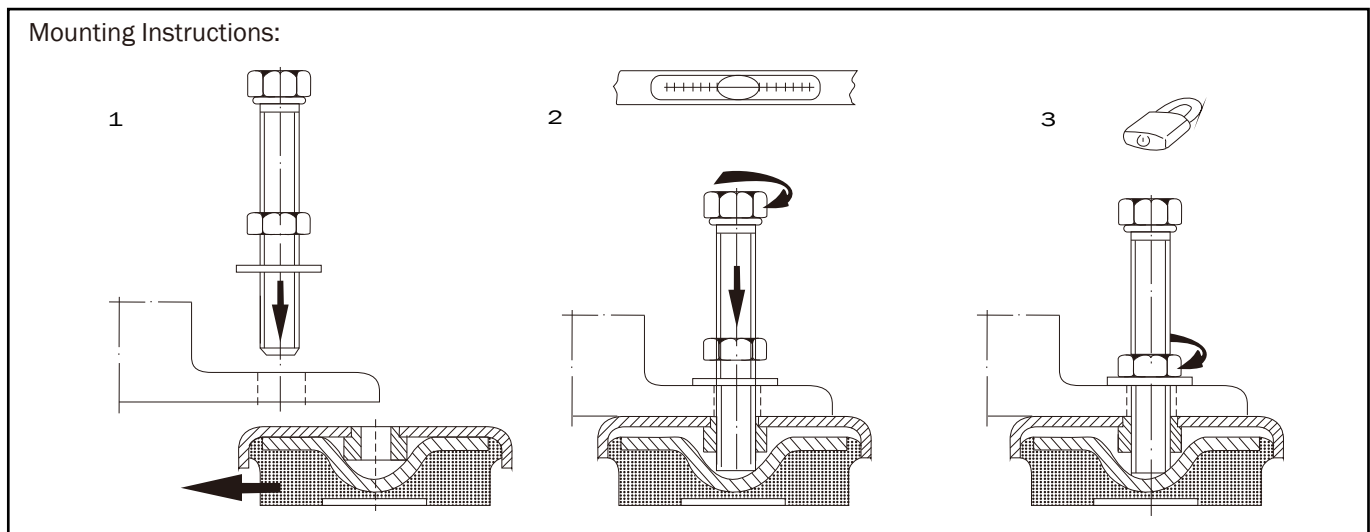
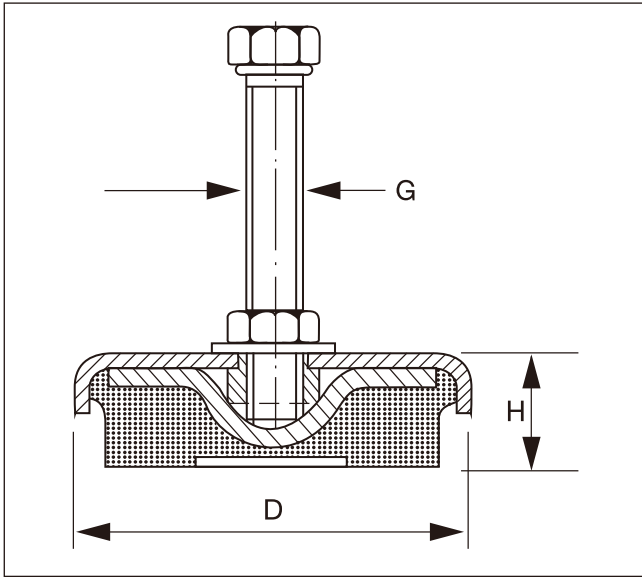


Novibra® type TF™

Novibra® type TF™ with level adjuster is suitable for a wide range of free standing workshop machines, e.g.

- ▼ Lathes
- ▼ Presses
- ▼ Plate shears
- ▼ Milling machines
- ▼ Nibbling machines
- ▼ Grinding machines
- ▼ Punches and cutters
- ▼ Woodworking machines
- ▼ Multiple operation machinery
- ▼ Plastic moulding machinery

| Type | Drawing no. | Part no. | Dimensions in mm | | | Overall Bolt Length | Thread G | Max Load (Kg) | Weight (Kg) |
|-------------------------------------|-------------|----------|------------------|------|------|---------------------|----------|---------------|-------------|
| | | | D | Hmin | Hmax | | | | |
| TF 250 | 19-0588 | 20-00623 | 69 | 23 | - | 100 | M12 | 250 | 0,40 |
| TF 250 ^S / _S | 19-0589 | 20-00678 | 69 | 23 | - | 100 | M12 | 250 | 0,40 |
| TF 600 | 19-0583 | 20-00624 | 81 | 25 | - | 100 | M12 | 600 | 0,49 |
| TF 600 ^S / _S | 19-0585 | 20-00679 | 81 | 25 | - | 100 | M12 | 600 | 0,49 |
| TF 1200 | 19-0577 | 20-00625 | 108 | 29 | - | 100 | M16 | 1200 | 1,00 |
| TF 1200 ^S / _S | 19-0578 | 20-00680 | 108 | 29 | - | 100 | M16 | 1200 | 1,00 |
| TF 3000 | 19-0591 | 20-00626 | 151 | 35 | - | 120 | M20 | 3000 | 2,20 |
| TF 4000 | 19-0596 | 20-00627 | 170 | 39 | - | 120 | M20 | 4000 | 2,90 |
| TF 6000 | 19-0598 | 20-00628 | 205 | 44 | - | 150 | M24 | 6000 | 4,80 |



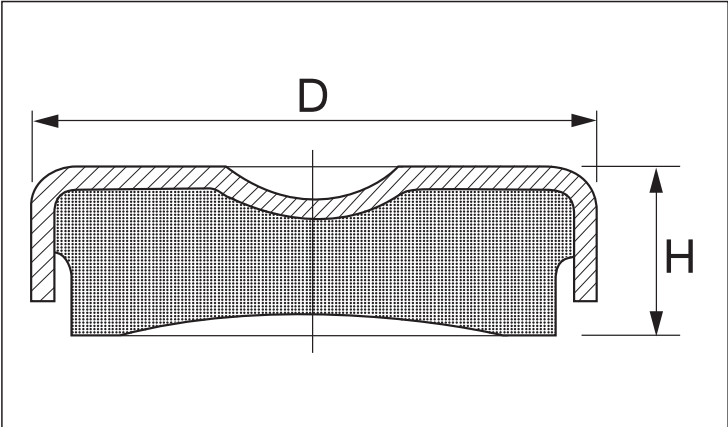
Loading range per mounting (kg)

| Mounting | Type of Machine | General Workshop Machines | Presses And Punches | | | | | | | |
|----------|-----------------|---------------------------|-------------------------------|------|-------|------|-------|------|-------|------|
| | | | Numbers of Strokes Per Minute | | | | | | | |
| | | | 1- | 125 | 126- | 175 | 176- | 225 | 226- | 275 |
| TF 250 | | 250 | 25- | 125 | 20- | 100 | 15- | 85 | 10- | 60 |
| TF 600 | | 251- 600 | 126- | 300 | 101- | 240 | 86- | 200 | 61- | 150 |
| TF 1200 | | 601- 1200 | 301- | 600 | 241- | 480 | 201- | 400 | 151- | 300 |
| TF 3000 | | 1201- 3000 | 601- | 2400 | 481- | 1600 | 401- | 1000 | 301- | 750 |
| TF 4000 | | 3001- 4000 | 2401- | 3200 | 1601- | 2100 | 1001- | 1300 | 751- | 1000 |
| TF 6000 | | 4001- 6000 | 3201- | 4800 | 2101- | 3200 | 1301- | 2000 | 1001- | 1500 |

Mounting TFE™ is a simpler version of type TF™ without level adjuster. It is used for machines which do not require height adjustment or where such a feature is already provided, e.g. by an adjusting screw in the machine.



Both models also available in stainless steel.



| Type | Drawing no. | Part no. | Dimensions in mm | | Max Load (Kg) | Weight (Kg) |
|----------|-------------|----------|------------------|----|---------------|-------------|
| | | | D | H | | |
| TFE 601 | 19-0571 | 20-00629 | 80 | 25 | 800 | 0,375 |
| TFE 1201 | 19-0574 | 20-00630 | 109 | 29 | 1600 | 0,925 |